



LP MOTORCYCLE • GEL BATTERY

# GB14L-A2 (12V 14Ah)

DIN: 51498

16/11/2020

## Description

The motor battery GB14L-A2, 12 volt, 14 Ah, is a starter battery with gel technology. The GB14L-A2 starter battery is already factory activated (filled and charged) and therefore ready to use. This gel battery is 100% leak-proof and can be installed in tilted position up to 90°. The GB14L-A2 delivers more starting power than a conventional battery and is suitable for the latest motorcycles and powersport vehicles.

## Performance

Rated Voltage	12
Nominal Capacity	14Ah (10hr)
CCA EN	180

## Dimensions / Weight

Dimensions	Length	134 mm
	Width	90 mm
	Container Height	166 mm
	Total Height	166 mm
Net. Weight	4.73 Kg	
Weight acid	0.94 Kg	
Terminal	F	
Layout	0	

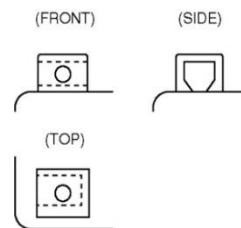
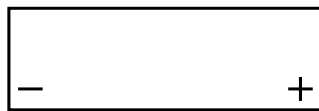


## Features

- Gel technology
- Superior starting power
- Superior vibration resistant
- Very low self-discharge
- 100% maintenance free
- Factory activated, ready to use!

## Layout

## Terminal



(Note) All above information shall be changed without prior notice, Landport Batteries reserves the right to explain and update the latest information.