



LP MOTORCYCLE • GEL BATTERY

# GT14B-4 (12V 12Ah)

DIN: 51203

16/11/2020

## Description

The motor battery GT14B-4, 12 volt, 12 Ah, is a starter battery with gel technology. The GT14B-4 starter battery is already factory activated (filled and charged) and therefore ready to use. This gel battery is 100% leak-proof and can be installed in tilted position up to 90°. The GT14B-4 delivers more starting power than a conventional battery and is suitable for the latest motorcycles and powersport vehicles.

## Performance

Rated Voltage	12
Nominal Capacity	12Ah (10hr)
CCA EN	190

## Dimensions / Weight

Dimensions	Length	151 mm
	Width	70 mm
	Container Height	147 mm
	Total Height	147 mm
Net. Weight	4.08 Kg	
Weight acid	0.75 Kg	
Terminal	F	
Layout	1	

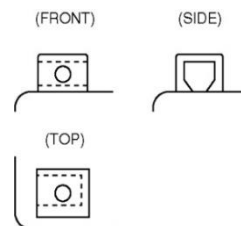


## Features

- Gel technology
- Superior starting power
- Superior vibration resistant
- Very low self-discharge
- 100% maintenance free
- Factory activated, ready to use!

## Layout

## Terminal



(Note) All above information shall be changed without prior notice, Landport Batteries reserves the right to explain and update the latest information.