



LP MOTORCYCLE • DRY BATTERY

YB12C-A (12V 12Ah)

DIN: 51294

25/11/2020

Description

The motorcycle battery YB12C-A, 12 volt, 12 Ah, is a conventional starter battery which delivers reliable starting power for an excellent price. The YB12C-A starter battery is dry pre-charged and comes with a separate acid pack and can only be installed in an upright position. This lead-acid YB12C-A battery is suitable for almost any vehicle with basic power needs.

Performance

Rated Voltage	12
Nominal Capacity	12Ah (10hr)
CCA EN	160

Dimensions / Weight

Dimensions	Length	135 mm
	Width	80 mm
	Container Height	174 mm
	Total Height	174 mm
Net. Weight	4.05 Kg	
Weight acid	0.96 Kg	
Terminal	F	
Layout	7	

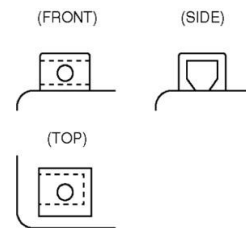
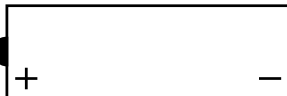


Features

- Conventional battery
- Robust technology
- Reliable starting power

Layout

Terminal



(Note) All above information shall be changed without prior notice, Landport Batteries reserves the right to explain and update the latest information.