



LP MOTORCYCLE • AGM BATTERY

# YTX20L-BS (12V 18Ah)

DIN: 51801

04/11/2020

## Description

The motor battery YTX20L-BS, 12 volt, 18 Ah, is a starter battery with AGM technology. The YTX20L-BS is dry pre-charged and comes with a fitting acid pack. This lead-acid battery is, after filling and charging, 100% maintenance free and leak-proof. Can be installed in tilted position up to 45°. The YTX20L-BS is a real allrounder and suitable for seasonal use and short distances.

## Performance

Rated Voltage	12
Nominal Capacity	18Ah (10hr)
CCA EN	250

## Dimensions / Weight

Dimensions	Length	175 mm
	Width	87 mm
	Container Height	154 mm
	Total Height	154 mm
Net. Weight	5.85 Kg	
Weight acid	1.15 Kg	
Terminal	F	
Layout	0	

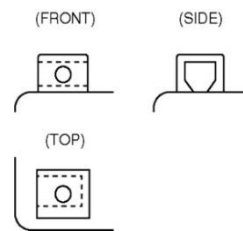


## Features

- Absorbent Glass Mat technology
- Advanced starting power
- Excellent vibration resistant
- 100% maintenance free once activated

## Layout

## Terminal



(Note) All above information shall be changed without prior notice, Landport Batteries reserves the right to explain and update the latest information.